

Wellen Court

Specialist care for adults with
early onset, mild, moderate
or advanced dementia



Contents

- 2 About Schoen Clinic UK
- 4 About Us
- 6 Expert Dementia Care
- 10 Senior Management Team
- 11 Finding Us

About Schoen Clinic UK

The Schön Klinik Group was founded in 1985 and has since developed into Germany's fifth-largest privately-owned hospital group. It currently treats 300,000+ patients annually at 46 hospitals and clinics across Europe.

Schön Klinik has remained a trusted and reputable provider of mental health care in Europe and is known for its high-quality services, expert staff and commitment to innovation and research.

Schoen Clinic (the UK arm of Schön Klinik Group) entered the UK healthcare market in 2017 and is recognised as one of the UK leaders in its field for treating people with eating disorders and mental health conditions.

We are consistently striving to improve our knowledge and understanding of mental health conditions, which enhances the treatment, support and care we provide.

Schoen Clinic UK is multi award-winning, offering innovative treatments for mental health conditions that are not always available via the NHS. We pride ourselves on being able to provide people with access to high quality healthcare, with minimal waiting times to start treatment.

Our purpose is to provide the most effective mental health care possible, helping people to feel better and recover faster.

With our groups' 37+ years experience treating mental health conditions, we have a longstanding reputation for providing highly specialised mental health care, both in the UK and internationally.

In late 2023, Schoen Clinic UK Group acquired the whole building transforming Schoen Clinic York from a 15 to 84-bed purpose built specialist facility.

With such an increase in capacity, services are gradually being extended to include adults with complex neurological conditions, starting with a complex dementia 20-bed service.

Our presence is international:

46 hospitals and clinics across Europe

Treating over **300,000 patients** each year

Employing over **11,000 colleagues**

Employing many of our **world-leading Consultants**

Highly specialised **multidisciplinary teams**

Award-winning facilities

Nationally and internationally recognised for **clinical outcome excellence**

Continuously reinvesting into our facilities, colleagues and technology



Our specialised service in the north of England

Modern facilities and comfortable accommodation

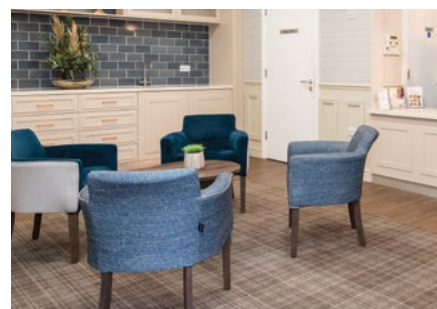
We take great steps to set-up the right environments for our patients. We understand that creating the right environment is crucial for allowing individuals to progress at their own pace, build trust with our team, and enjoy a person-centred approach which enhances their quality of life.

Our new dementia service offers 20 en-suite modern, homely and comfortable bedrooms.

Patients also have access to landscaped gardens which are safe, secure and peaceful, providing an ideal environment for serenity, calm and outside enjoyment.

Facilities at Schoen Clinic York

- Parking
- Pet friendly (by prior arrangement)
- TV lounge
- Multi-faith room
- Disabled access
- Lift
- WiFi
- Hairdressing



Treatment funding types accepted;

- NHS
- Local Authority
- Self-funding
- Insurance companies





Dementia service for;

- Early onset
- Mild
- Moderate
- Advanced

Specialised dementia care

Our new dementia service offers expert care for patients living with dementia, including those with early onset dementia. We offer flexible care options tailored to the needs of the individual and their support networks on an hourly, daily, weekly or monthly basis.

Our comprehensive service includes inpatient, daycare and respite care.

Dementia is a progressive condition and can affect people in many different ways, depending on the type. The impact of dementia can be physical, emotional and psychological and have profound effects on all aspects of a person's daily life, and that of their families and loved ones.

We take a supportive, person-centred approach to caring for people with dementia and our new service has been adapted to provide a calming, dementia-friendly environment helping to reduce stress and anxiety, whilst maintaining independence and dignity.

Our York team provides holistic and therapeutic treatments, collaborating closely with community teams, dementia charities and other care professionals to ensure individuals receive comprehensive support, tailored to their needs.

We are committed to providing comprehensive and compassionate care for individuals living with dementia.

Our services include:

- **Fostering life skills**

We offer support and encourage patients to take part in stimulating and meaningful activities to support their health and wellbeing, and maximise their independence for as long as possible.

- **Encouraging movement**

We will support people to maintain their mobility and stay as active as possible.

- **Occupational therapy**

We want to help people live well with dementia, by considering their physical, psychological, social and environmental needs and make sure our environment is right in all aspects including furniture, signage and décor.

- **Implementing a supportive culture**

We will work with individuals to develop positive behavioural support plans (PBSP) and understand the reasons for different presentations. This provides our colleagues with the tools to support and manage the complexities of the condition. The nursing team is supported by a full multidisciplinary team (MDT) including a Consultant Psychiatrist.

We understand that those living with dementia are in a vulnerable state and we take every step to ensure care is delivered with the utmost respect and dignity. We have highly trained experts who ensure safe and effective care is delivered and maintained.

Our colleagues have undergone specialist training and we have invested heavily to ensure staffing levels meet or exceed national standards. We have the right mix of registered nurses, healthcare assistants, therapists and a comprehensive clinical team, all dedicated to providing exceptional care.



Meet our senior management team

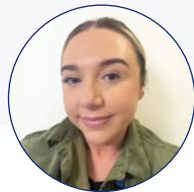


Chloe Baron
Hospital Director

Chloe's journey at Schoen Clinic began in January 2019 as a senior mental health nurse, quickly progressing to Clinical Manager before her promotion to Hospital Director in August 2023.

Chloe oversees the clinical, financial and operational performance of the hospital, ensuring the highest standard of quality patient care is provided.

Chloe has extensive experience in a wide range of mental health disorders.



Natalie Wood
Clinical Manager

Natalie is a registered mental health nurse by background.

As Clinical Manager, Natalie's role is to lead the nursing and healthcare teams ensuring safe and effective nursing practices are embedded and championed at all times.



Callum McGuinness
Therapy Services Manager

Callum has been part of our specialist multidisciplinary team at Schoen Clinic York since 2022.

Taking on the role of Therapy Services Manager in 2024, he brings a wealth of experience along with a natural ability to connect with patients in our care.

Visiting

We warmly welcome friends and relatives to visit and stay connected with their loved ones. Our open and flexible visiting policy makes it easy to be accessible. Speak to our local team for more information.

We offer areas where visitors can join their loved ones for a meal, fostering that all-important sense of family togetherness. Additionally, we have a designated children's visiting area, allowing our residents to enjoy quality time with their younger visitors.

Finding us

We are situated on Haxby Road, York on the same estate as Nuffield Health York Hospital and are easily accessible by car. Parking is available on site.

We are accessible by public transport, with bus routes serving the area and nearby York train station, providing convenient travel options for patients and visitors. We are happy to arrange mobility taxis if required.

Easy access to exceptional care

We like to make accessing our services as easy as possible. If you or someone you know or care for needs our help, please reach out to our friendly team using the details below.

Telephone: 01904 404400

General enquiries:
yor-enquiries@schoen-clinic.co.uk

Secure email for referrals:
schoenclinyork.referrals@nhs.net






Website: schoen-clinic.co.uk/york

Address: Schoen Clinic York,
Haxby Road, York, YO31 8TA



SCHOEN
CLINIC
GROUP

Follow us on socials

-  @Schoen Clinic UK Group
-  @SchoenClinicUK
-  @SchoenClinicUK
-  @SchoenClinicUK
-  @SchoenClinicUK

schoen-clinic.co.uk

